



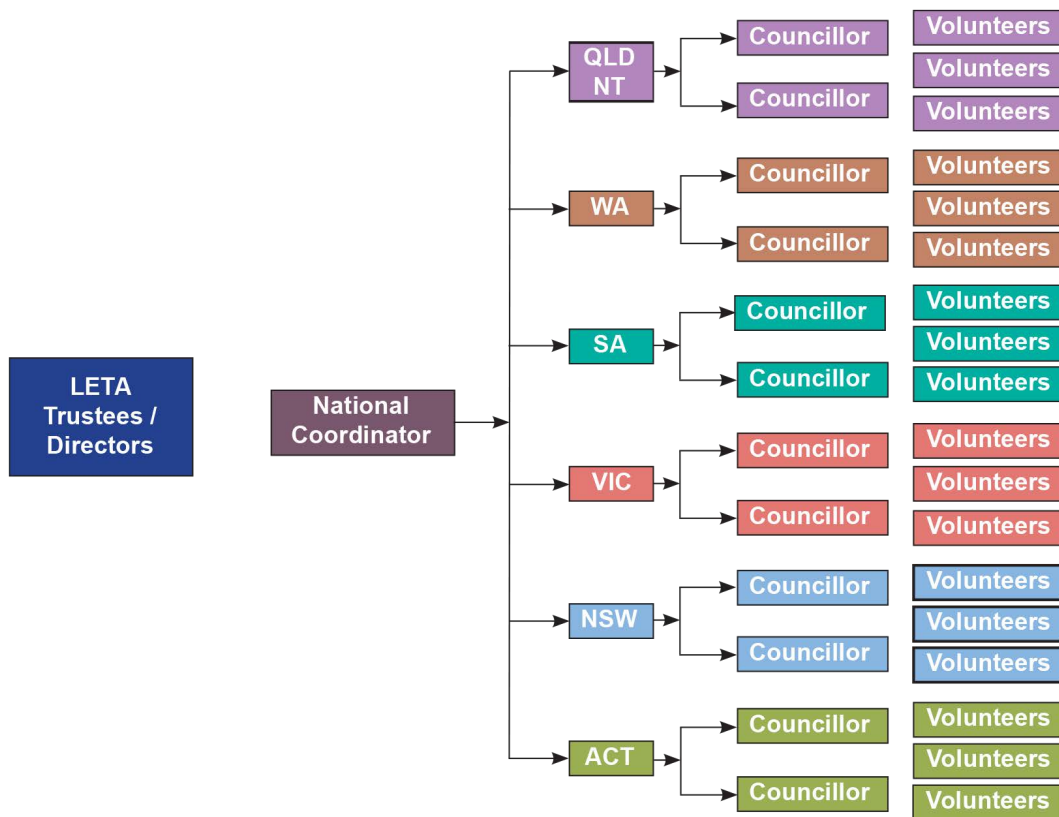
# LIFE ETERNAL TRUST AUSTRALIA

## MANAGEMENT SYSTEMS MANUAL

### ORGANISATION STRUCTURE:

LETA is governed and administered by Trustee/Directors supporting a Coordinator and Councillors. All positions are filled by volunteers only. The volunteers are selected by a unique meditation technique through which the Yogis (participating members) select the organisation functionaries. LETA is governed at national level by a National Coordinator. The coordinator is elected for a duration of 5 years. The National Coordinator is supported by state level Councillors. Each Councillor is selected by the Yogis for a period of 3 to 5 years. Day to day activities of LETA is supported by volunteers who act as directed by the Coordinator(s) and/or Councillors. Following is the organisation structure of the LETA.

## LIFE ETERNAL TRUST AUSTRALIA ORGANISATION STRUCTURE



The National Coordinator is responsible for all State Councillors. All State Councillors in any state are jointly responsible for all LETA organisation within their state. This organisation structure requires close interaction between the Trustees/Directors and the National Coordinator at the national level and similarly between all Councillors at state level.